



PMG | Pole Mounted Graphic Display

Pole Mounted Graphic Display

A Full-Function, Dynamic Matrix Message Center

Available in 30cm, 38cm, and 45cm digit height models

The Pole Mounted Graphic display (PMG) is a dynamic text and animated graphics display system that is portable and expandable. Powerful options transform a mounted speed sign into a self-contained communications center.

- **Stalker Easy Analyst** traffic statistics capture
- AC, DC, or solar/battery power options
- Configuration through PC application or iOS and Android App
 - Create custom messages and animation
 - Set and run schedules
 - Oversee solar/battery status
 - Manage radar options and traffic data

Powerful Options

- Messaging and graphics
- 30, 50, or 100W Solar power with battery
- Simulated camera flash
- Traffic alert strobes
- Wireless communication
- Ethernet connectivity



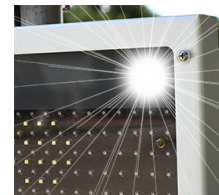
Optional folding feet and handle



30cm model shown with optional YOUR SPEED aluminium MUTCD compliant bezel, solar panel, and battery system



Traffic alert strobes



Simulated camera flash

STALKER®

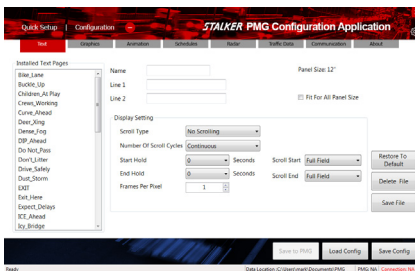
Power to Enforce.



Gather valuable traffic statistics

The PMG will collect traffic statistics at the same time it is performing its messaging operation. The PMG has enough internal storage memory (up to 64 GB) to collect and retain this data for months in heavy traffic.

Traffic data can then be turned into meaningful reports using the *Stalker Easy Analyst* software.



Local Configuration and Data Access

- Create custom messages and animation
- Set and run schedules
- Oversee solar/battery status
- Manage radar options for traffic data

Display

	30cm	38cm	45cm
Led count	756	1050	1488
LED organization	21 rows by 36 columns	25 rows by 42 columns	31 rows by 48 columns
Display color	Amber, 590 nm	Amber, 590 nm	Amber, 590 nm
Maximum intensity (typical)	4000 mcd	4000 mcd	4000 mcd
Intensity controls	Fixed, Auto, and Combo	Fixed, Auto, and Combo	Fixed, Auto, and Combo
Light dispersion	±15 degrees Horizontal ±15 degrees Vertical	±15 degrees Horizontal ±15 degrees Vertical	±15 degrees Horizontal ±15 degrees Vertical
Display height	304 mm	381 mm	457 mm
Display width	470 mm	584 mm	647 mm

Power Consumption

Idle (no display)	1.6 Watts	1.6 Watts	1.6 Watts
Display 88, 100% brightness	14 Watts	20 Watts	26 Watts
Operating voltages	12 VDC or 90-240 VAC, 50/60 Hz	12 VDC or 90-240 VAC, 50/60 Hz	12 VDC or 90-240 VAC, 50/60 Hz

Radar Characteristics

Frequency	24.125 MHz ±100 MHz	24.125 MHz ±100 MHz	24.125 MHz ±100 MHz
Output power	10 mW	10 mW	10 mW
Directional	Approaching + receding	Approaching + receding	Approaching + receding
Typical range	183 m	230 m	275 m
Beam width	32° H x 30° V	32° H x 30° V	32° H x 30° V
Statistical Tracking capability	10 vehicles simult.	10 vehicles simult.	10 vehicles simult.

Physical Characteristics

Case height	409 mm	490 mm	560 mm
Case width	540 mm	650 mm	770 mm
Depth, base unit excluding bracket	31 mm	31 mm	31 mm
Depth, with power module installed	54 mm	54 mm	54 mm
Mounting Bracket depth (base unit)	44 mm	44 mm	44 mm
Weight, excluding mounting bracket	4.22 kg	6 kg	7.9 kg
Window Color	Clear	Clear	Clear
Window material	4.5 mm acrylic	4.5 mm acrylic	4.5 mm acrylic
Case Color	White	White	White
Case material	2.3 mm aluminum, powder coat finish	2.3 mm aluminum, powder coat finish	2.3 mm aluminum, powder coat finish

Environmental Characteristics

Operating Temperature range	-30°C to +50°C	-30°C to +50°C	-30°C to +50°C
Ingress rating	IP65 Waterproof	IP65 Waterproof	IP65 Waterproof

STALKER®

Power to Enforce.

Ballinger Technology Pty Ltd

Unit 20, 23 Heyington Avenue Thomastown 3074 Victoria
Ph: (03) 9386 8722 Email: sales@ballingertech.com.au



006-0018-00 Rev B